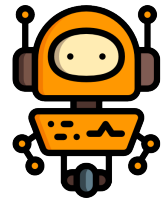


Name: \_\_\_\_\_

## Converting Between Centimeters, Millimeters, Meters

**Directions:** Find the equivalent measurement.



1. 1 m = \_\_\_\_\_ mm

9. 1 cm = \_\_\_\_\_ mm

2. 100 cm = \_\_\_\_\_ m

10. 5,000 mm = \_\_\_\_\_ m

3. 10 m = \_\_\_\_\_ cm

11. 12,000 mm = \_\_\_\_\_ m

4. 1,000 mm = \_\_\_\_\_ m

12. 92,000 mm = \_\_\_\_\_ cm

5. 200 cm = \_\_\_\_\_ m

13. 23,000 cm = \_\_\_\_\_ m

6. 300 cm = \_\_\_\_\_ m

14. 310 cm = \_\_\_\_\_ mm

7. 5 m = \_\_\_\_\_ mm

15. 15 m = \_\_\_\_\_ mm

8. 3 m = \_\_\_\_\_ cm

16. 32,400 mm = \_\_\_\_\_ cm

## ANSWER KEY

1.  $1 \text{ m} = 1,000 \text{ mm}$

9.  $1 \text{ cm} = 10 \text{ mm}$

2.  $100 \text{ cm} = 1 \text{ m}$

10.  $5,000 \text{ mm} = 5 \text{ m}$

3.  $10 \text{ m} = 1,000 \text{ cm}$

11.  $12,000 \text{ mm} = 12 \text{ m}$

4.  $1,000 \text{ mm} = 1 \text{ m}$

12.  $92,000 \text{ mm} = 9,200 \text{ cm}$

5.  $200 \text{ cm} = 2 \text{ m}$

13.  $23,000 \text{ cm} = 230 \text{ m}$

6.  $300 \text{ cm} = 3 \text{ m}$

14.  $310 \text{ cm} = 3,100 \text{ mm}$

7.  $5 \text{ m} = 5,000 \text{ mm}$

15.  $15 \text{ m} = 15,000 \text{ mm}$

8.  $3 \text{ m} = 300 \text{ cm}$

16.  $32,400 \text{ mm} = 3,240 \text{ cm}$