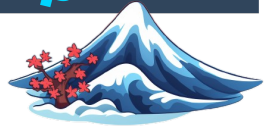


Name: _____

DAY OF THE NINJA!



International Ninja Day, celebrated on December 5th, honors the rich cultural history and skilled artistry of the ninja, a symbol of stealth and discipline from ancient Japan, inspiring fascination and respect for their historical significance and martial arts expertise.

Directions: Use your math skills to find the value of each icon and the '?' in the puzzle below.

$$\text{White Ninja} + \text{Red Ninja} + \text{White Ninja} = 42$$

$$\text{Star} + \text{Star} + \text{White Ninja} = 30$$

$$\text{White Ninja} = \text{Red Ninja}$$

$$\text{Star} + \text{White Ninja} = \text{House}$$

$$\text{White Ninja} + \text{House} + \text{Star} = ?$$

My Answer: ? = _____

Answer Key:

Male Ninja (White Uniform)=14

Female Ninja (Red Uniform)=14

Throwing Star=8

Dojo=22

?=44

Fun Fact: Ninjas, known for their stealth and secrecy, were also masters of disguise, often blending into their surroundings or dressing as ordinary people like farmers or monks to gather information without being detected!