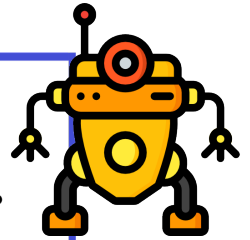


Name: _____

Long Division Practice (Possible Remainders) (B)

Directions: Use long division to find the quotient of each of the following. Be sure to include the remainder, even if it is zero.



$3 \overline{)26}$	$3 \overline{)27}$	$4 \overline{)41}$
$3 \overline{)17}$	$2 \overline{)37}$	$7 \overline{)54}$
$8 \overline{)49}$	$9 \overline{)87}$	$7 \overline{)23}$
$8 \overline{)68}$	$2 \overline{)19}$	$7 \overline{)85}$

ANSWER KEY

$\begin{array}{r} 8 \text{ R}2 \\ 3 \overline{)26} \end{array}$	$\begin{array}{r} 9 \text{ R}0 \\ 3 \overline{)27} \end{array}$	$\begin{array}{r} 10 \text{ R}1 \\ 4 \overline{)41} \end{array}$
$\begin{array}{r} 5 \text{ R}2 \\ 3 \overline{)17} \end{array}$	$\begin{array}{r} 18 \text{ R}1 \\ 2 \overline{)37} \end{array}$	$\begin{array}{r} 7 \text{ R}5 \\ 7 \overline{)54} \end{array}$
$\begin{array}{r} 6 \text{ R}1 \\ 8 \overline{)49} \end{array}$	$\begin{array}{r} 9 \text{ R}6 \\ 9 \overline{)87} \end{array}$	$\begin{array}{r} 3 \text{ R}2 \\ 7 \overline{)23} \end{array}$
$\begin{array}{r} 8 \text{ R}4 \\ 8 \overline{)68} \end{array}$	$\begin{array}{r} 9 \text{ R}1 \\ 2 \overline{)19} \end{array}$	$\begin{array}{r} 12 \text{ R}1 \\ 7 \overline{)85} \end{array}$