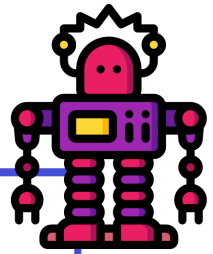


Name: _____

Long Division Practice (No Remainders) (B)

Directions: Use long division to find the quotient of each of the following.



$3 \overline{)24}$	$5 \overline{)20}$	$12 \overline{)84}$
$2 \overline{)18}$	$7 \overline{)56}$	$4 \overline{)48}$
$9 \overline{)90}$	$11 \overline{)22}$	$9 \overline{)27}$
$10 \overline{)120}$	$2 \overline{)18}$	$8 \overline{)48}$

ANSWER KEY

$\begin{array}{r} 8 \\ 3 \overline{)24} \end{array}$	$\begin{array}{r} 4 \\ 5 \overline{)20} \end{array}$	$\begin{array}{r} 7 \\ 12 \overline{)84} \end{array}$
$\begin{array}{r} 9 \\ 2 \overline{)18} \end{array}$	$\begin{array}{r} 8 \\ 7 \overline{)56} \end{array}$	$\begin{array}{r} 12 \\ 4 \overline{)48} \end{array}$
$\begin{array}{r} 10 \\ 9 \overline{)90} \end{array}$	$\begin{array}{r} 2 \\ 11 \overline{)22} \end{array}$	$\begin{array}{r} 3 \\ 9 \overline{)27} \end{array}$
$\begin{array}{r} 12 \\ 10 \overline{)120} \end{array}$	$\begin{array}{r} 9 \\ 2 \overline{)18} \end{array}$	$\begin{array}{r} 6 \\ 8 \overline{)48} \end{array}$