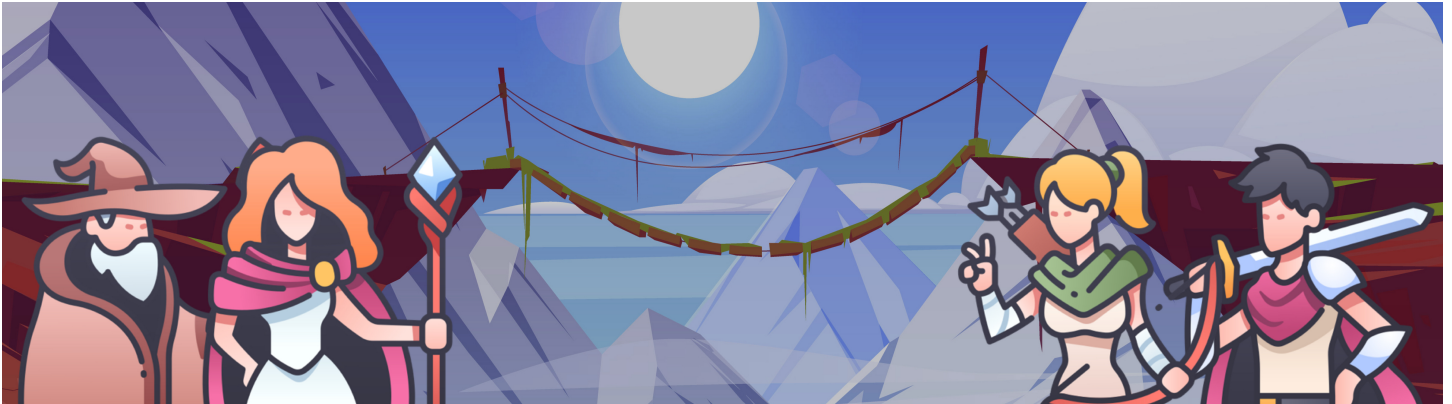


Name: _____

The Bridge of Destiny Math Riddle



Four travelers on a quest must cross a fragile bridge to continue their journey.

No individuals can cross the bridge without the Destiny Gem close by, which, fortunately, they have in their possession.



If, at any time, more than two individuals walk on the bridge, it will collapse.

Each traveller moves at a different pace and it will take each traveller the following amount of time to cross the bridge:

Sorceress: 1 minute, Archer: 2 minutes, Warrior: 5 minutes, Wizard: 8 minutes

When two travelers cross the bridge together, they must move at the slower person's pace.

What is the shortest time needed for all four travelers to cross the bridge?

Key: 15 minutes

Elapsed Time	Starting Side	Action	Ending Side
0 minutes	Sorceress Archer Warrior Wizard		
2 minutes	Warrior Wizard	Sorceress and Archer cross the bridge with the Destiny Staff, taking 2 minutes	Sorceress Archer
3 minutes	Sorceress Warrior Wizard	Sorceress returns back with the Destiny Staff, taking 1 minute	Archer
11 Minutes	Sorceress	Warrior and Wizard take the Destiny Staff and cross, taking 8 minutes	Archer Warrior Wizard
13 Minutes	Sorceress Archer	Archer returns back with the Destiny Staff, taking 2 minutes	Warrior Wizard
15 Minutes		Sorceress and Archer cross the bridge with the Destiny Staff, taking 2 minutes	Sorceress Archer Warrior Wizard