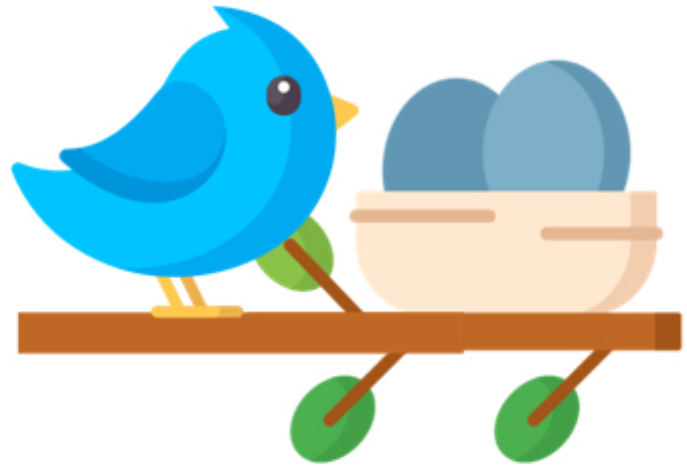


Name: _____

A BIRD AND A HALF

If a blue bird and a half lay an egg and a half in a day and a half, how many eggs will half a dozen blue birds lay in half a dozen days?



My Work:

My Answer: _____

(Hint: You are increasing the number of birds and the amount of time four-fold...)

Key:

24 eggs (by increasing the number of birds and the amount of time 4 times each, you are increasing the number of eggs 16 times; $1.5 \times 16 = 24$)